



## Features at a glance

- Marine grade aluminium frame and stainless steel hardware for longevity
- Elegant and simple to operate tilt system
- Rotates 360°
- Durable high performance hub and fittings
- Custom designed protection cover included

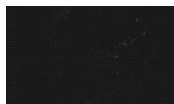
## Canopy

- Commercial Grade: 100% solution dyed
- Maintenance: All fabrics can be washed and are replaceable
- Shade Rating: UPF 50+
- Colourfastness: 4/5
- Weight: 290 g/m<sup>2</sup>
- Waterproof Rating: >300mm water column

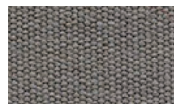
### Stock Colours\*



Egg Shell White



Black Widow



Boulder Grey

\*other non-stock colours available on request.

## Mounting Options

### Surface Plate

For deck, patio and concrete mounting.



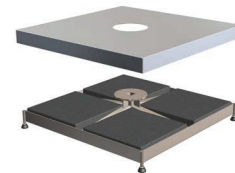
### In-Ground Anchor

For mounting with a concrete footing.



### Free-Standing Base\*

For complete customized maneuverability.



\*Concrete Pavers are required for ballast (not supplied)  
Castor Wheels are optional.

## BEST-IN-CLASS WARRANTY

Relax easy knowing your outdoor umbrella purchase is protected by the industry's best warranty (conditions apply) and customer support.



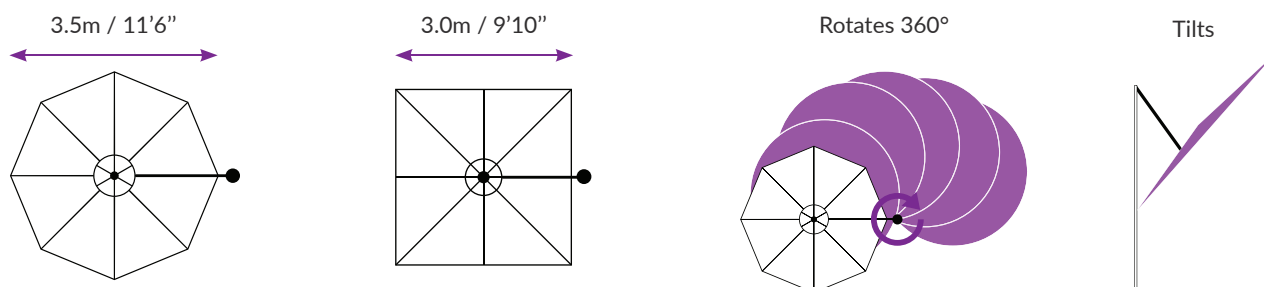
Fabric  
Warranty



Frame  
Warranty

## TILTING OFFSET UMBRELLA

### Size & Configuration



### Umbrella Dimensions



#### Diagram Legend

- A** Clearance of Closed Strut Arms\*
- B** Depth of Umbrella When Closed
- C** Overall Height\*
- D** Height to Edge of Canopy\*
- E** Height to Centre Hub\*
- F** Handle Height\*
- G** Canopy Width
- H** Centre of Mast to Outside Edge of Canopy

#### 3.5m / 11'6" Octagon

- 880mm / 2'11"
- 450mm / 1'6"
- 2723mm / 8'11"
- 2125mm / 7'0"
- 2065mm / 6'9"
- 940mm / 3'1"
- 3480mm / 11'5"
- 3595mm / 11'10"

#### 3.0m / 9'10" Square

- 880mm / 2'11"
- 450mm / 1'6"
- 2723mm / 8'11"
- 2125mm / 7'0"
- 2065mm / 6'9"
- 940mm / 3'1"
- 3000mm / 9'10"
- 3595mm / 11'10"

\*Free-Standing Base installations will add 120mm/4.7" to the height and surface plates will add 12mm | ½" to the height. Adding Free-Standing base wheels also will add a further 45-80mm | 2-3". All sizings are +/- 2.5mm | ⅜" and subject to change without notice.



Ashadya Australia

Call: 1300 570 901

Email: [info@ashadya.com.au](mailto:info@ashadya.com.au)

Website: [www.ashadya.com.au](http://www.ashadya.com.au)



**shadowspec**

umbrellas with distinction