



**shadowspec**  
umbrellas with distinction



## SHADOWSPEC SERENITY™

Precision Engineered Ambience



**Fabric  
Warranty\***  
BEST-IN-CLASS



**Frame  
Warranty\***  
BEST-IN-CLASS



Trusted for  
over 25 years



Hand built in  
New Zealand



Marine  
Grade

# SHADOWSPEC SERENITY™ Single Canopy Rotating Cantilever Umbrella

## Patented & Trademarked Technology



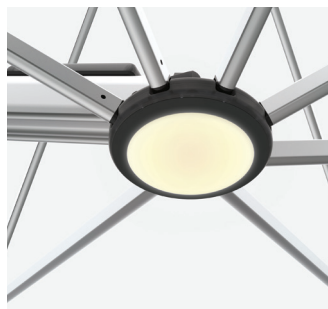
### SHADOWLIFT™

Gas-assisted deployment for an easy lift.



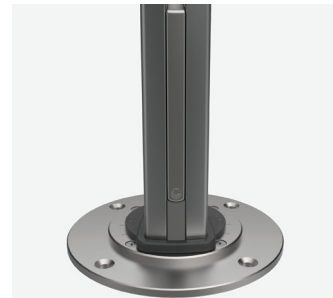
### SHADOWGLIDE™

Engineered to open or close in 5 seconds.



### SHADOWHUB™

LED light technology built-in and App controlled.



### SHADOWLOCK™

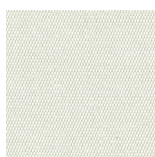
Integrated security and wind-protection.

## Canopy



**Fabric Warranty\***  
BEST-IN-CLASS

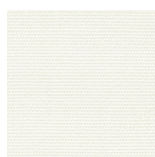
### Stock Colours



Oyster



Alpine Stone



Natural



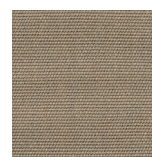
Storm



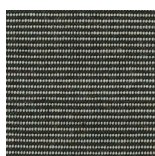
Charcoal



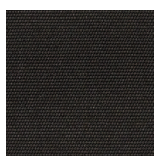
Slate



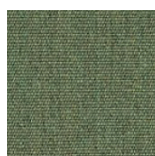
Taupe



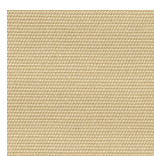
Charcoal Tweed



Black



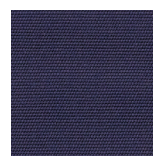
Fern



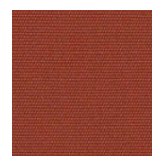
Linen



Sunflower Yellow



Captain Navy



Terracotta

### Special-Order Colours\*\*

**RECASENS**  
BCN 1886

 **sunbrella®**

\*\*Special-Order Colours are non-stock and will incur an additional lead time and surcharge. Full Sunbrella range is available as a custom colour option.



Marine Grade



Solution-dyed,  
High Colour Fastness



UV and Fade  
Resistant



UPF 80 UV  
Protection



Eco-friendly  
Production



Breathable  
Weave



Mould and  
Mildew Resistant



Oil and Stain  
Repellent



Easy  
Clean



Water  
Resistant



Chlorine  
Resistant

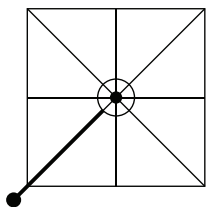


Tear  
Resistant

## Size & Configuration

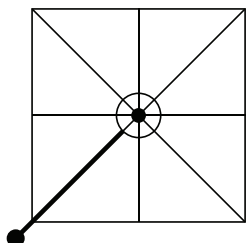
### SQUARE

2.5m | 8'



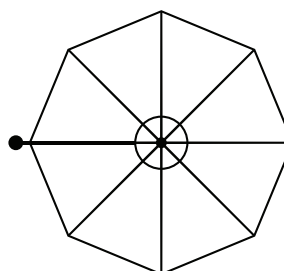
### SQUARE

3.0m | 10'



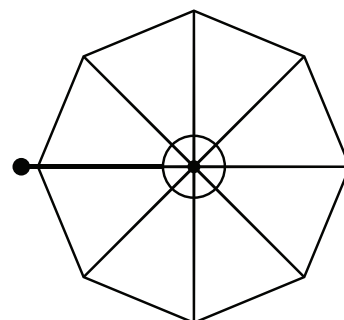
### OCTAGON

3.5m | 11'



### OCTAGON

4.0m | 13'

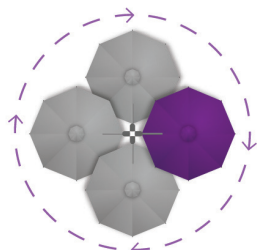


## Features



### MARINE GRADE

No-rust, 316 Stainless Steel Spigot.



### FOLLOW THE SUN

Enjoy the 360° rotation for all-day-shade.



### LED LIGHT CONTROL

Power your light with the optional Smart Battery or Hardwire Kit.



### PROTECTION COVER

Optional care and protection for your umbrella.

## Mounting Options

### SURFACE PLATE

For deck, patio and concrete mounting.  
(316 Stainless Steel)



### IN-GROUND ANCHOR

For mounting with a concrete footing.



### WALL MOUNT BRACKET

For when ground mounting isn't possible.  
(316 Stainless Steel)



### FREE-STANDING BASE + ALUMINIUM BASE COVER\*

For complete customised manoeuvrability.



Optional Castor Wheels.

N.b. Concrete Pavers are required for ballast (not supplied).



# Dimensions

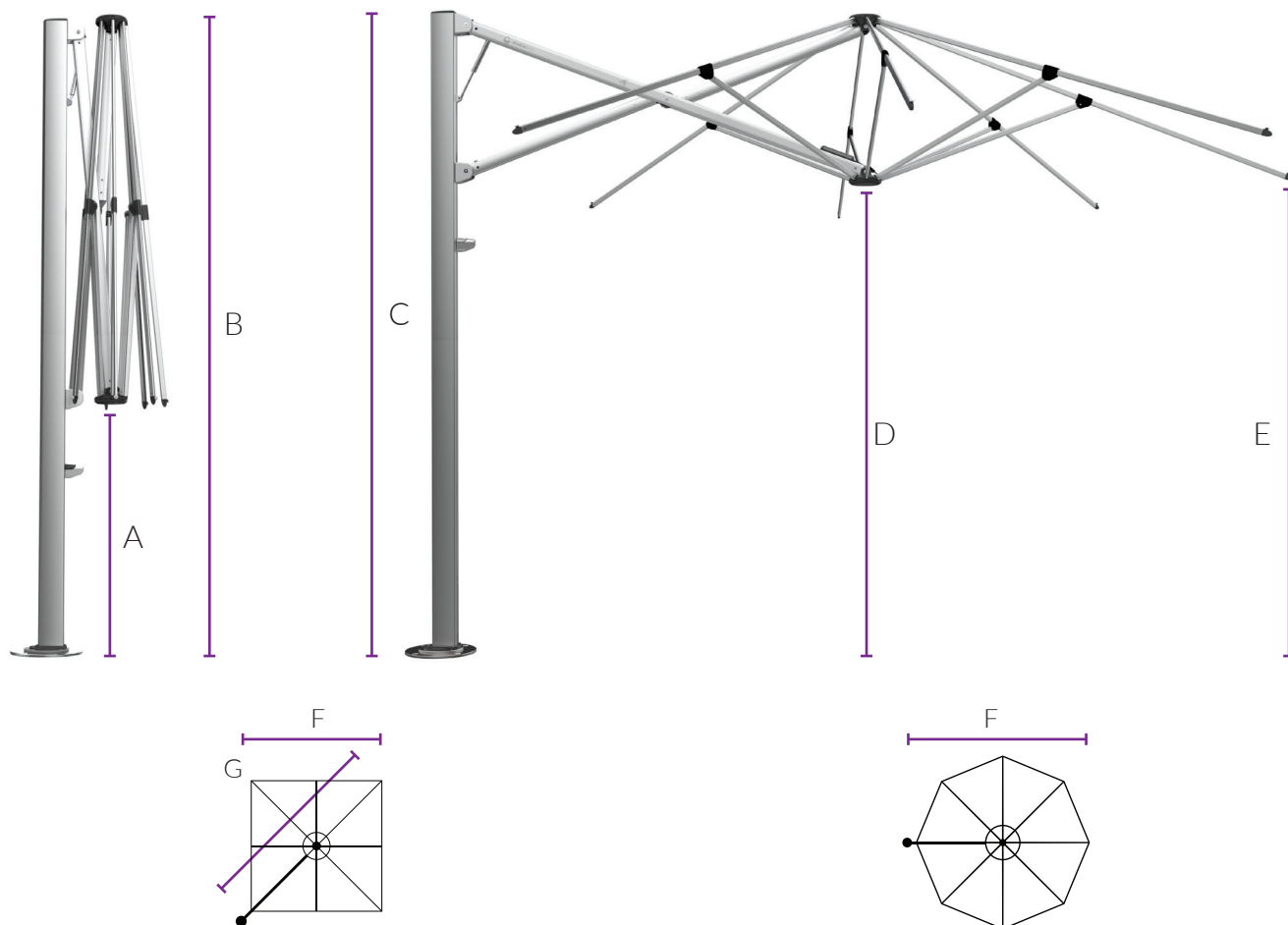


Diagram Legend		2.5m	8'	3.0m	10'	3.5m	11'	4.0m	13'
<b>A</b>	Ground to central frame hub when closed*	860mm	2'10"	620mm	2'1"	1079mm	3'7"	866mm	2'10"
<b>B</b>	Total height to top of canopy*	2900mm	9'6"	2824mm	9'3"	2975mm	9'9"	2899mm	9'6"
<b>C</b>	Height of umbrella to top of mast cap*	2908mm	9'6"	2908mm	9'6"	2908mm	9'7"	2908mm	9'6"
<b>D</b>	Ground to central frame hub when open*	2130mm	7'0"	2054mm	6'9"	2205mm	7'3"	2128mm	7'0"
<b>E</b>	Ground to lower outer edge of canopy*	2222mm	7'3"	2219mm	7'3"	2237mm	7'4"	2172mm	7'2"
<b>F</b>	Centre of Spigot to outside edge of canopy	2646mm	8'8"	2973mm	9'10"	3447mm	11'4"	3923mm	12'10"
<b>G</b>	Diagonal from centre of mast to corner	3742mm	12'3"	4205mm	13'10"	N/A	N/A	N/A	N/A

\*Free-Standing Base installations will add 165mm | 6" to the height and surface plates will add 12mm | ½" to the height. Adding Free-Standing Base wheels will add a further 45-80mm | 2-3" to the height. All sizings and conversions are approximate and subject to change without notice. Refer to specsheets for exact, up-to-date measurements.

**Contact our in-house shade & outdoor specialists for more information and advice.**



Call: 1300 570 901  
Email: [info@ashadya.com.au](mailto:info@ashadya.com.au)  
Website: [www.ashadya.com.au](http://www.ashadya.com.au)



**shadow spec**  
umbrellas with distinction